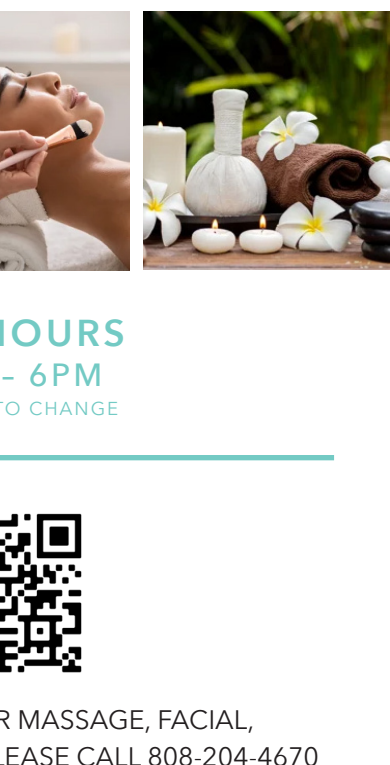


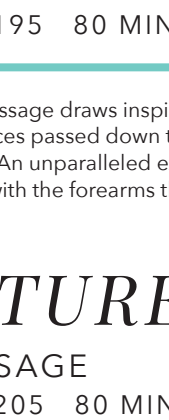
# OUTRIGGER®

## KAUAI BEACH RESORT & SPA

### SPA MENU



**SPA HOURS**  
9AM - 6PM  
SUBJECT TO CHANGE



TO SCHEDULE YOUR MESSAGE, FACIAL,  
OR BODY TREATMENT, PLEASE CALL 808-204-4670

[www.hawaiianrainforestkauai.com](http://www.hawaiianrainforestkauai.com)

MAE 3480 | BSH 5828

## MASSAGE THERAPY

Massage treatments nourish the skin and underlying tissues, ease muscle tension, restore balance, promote detoxification, and help the body adjust to time zone shifts.



## LOMI LOMI

### HAWAIIAN MESSAGE

50 MINUTES | \$195 80 MINUTES | \$245

Our most requested massage draws inspiration from ancient Hawaiian healing practices passed down to the modern era by our island Kumu (teachers). An unparalleled experience featuring long, rhythmic strokes done with the forearms that is as therapeutic as it is relaxing.

## SIGNATURE

### FUSION MESSAGE

50 MINUTES | \$205 80 MINUTES | \$255

A custom massage that provides relief for the individual - no two massages are the same. Personalized to your needs, this fusion massage blends together various massage techniques to release tension, increase circulation, and foster relaxation.

## HAPAI

### PRENATAL MESSAGE

50 MINUTES | \$205 80 MINUTES | \$255

A nurturing treatment tailored to comfort and stage of pregnancy, helping to ease pregnancy related physical changes including back pain, sciatica, swelling, and muscle spasms.

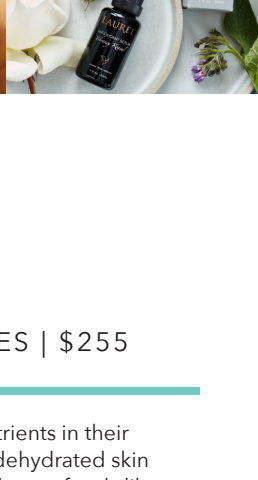
## SPORTS

### TARGETED MESSAGE

50 MINUTES | \$225 80 MINUTES | \$275

Targeting different muscles groups for golf, tennis, running, hiking, and surfing, this vigorous massage uses joint mobilization, stretching, and trigger-point release to promote improved range of motion and flexibility.

## FOCUSED TREATMENTS



## SCALP THERAPY

### HAIR MASK + MESSAGE

20 MINUTES | \$115

Warm, hydrating hair mask is massaged into the scalp and hair. Take a journey into nirvana that includes neck, shoulder, and face massage designed to ease chronic head and neck pain.

## WAWAE

### FOOT REFLEXOLOGY

20 MINUTES | \$110

Restore the natural balance and wellbeing of your body, while exotic Mango Butter hydrates your feet. This therapy, that can be traced back to ancient Egypt, applies pressure to specific points on the feet - reducing stress, aiding digestion, and promoting sound sleep.

## NECK + BACK + SHOULDERS

### STRESS RELEASE MESSAGE

20 MINUTES | \$110

A therapeutic massage designed to target the areas of your body that are most prone to pain, tension, and stress.

## GARSHANA

### DRY BRUSHING

20 MINUTES | \$115

Practiced for centuries, Garshana is a part of Ayurvedic Medicine, the traditional medicine native to India. Stimulating - yet relaxing, this treatment supports the lymphatic system and natural detoxification while improving skin texture and suppleness.

## TRANSFORMATIONAL JOURNEYS



## KEALOHA

### LOVED ONE

### HONEYMOON INDULGENCE

80 MINUTES | \$275

Celebrate love - fresh honeymooners, mature flames, or self-care aficionados welcome! A head-to-toe ritual featuring Coconut-Lime Blossom Body Butter, a tropical warm hair mask + scalp massage, and luxurious hand and foot exfoliations made with crushed coconut shells and pineapple enzymes.

## PALA'AU

### TO HEAL WITH HERBS

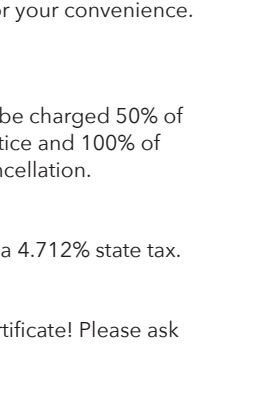
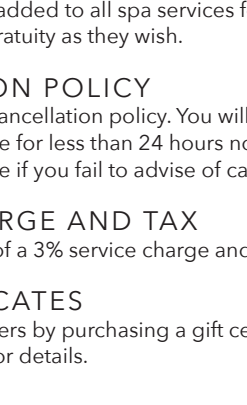
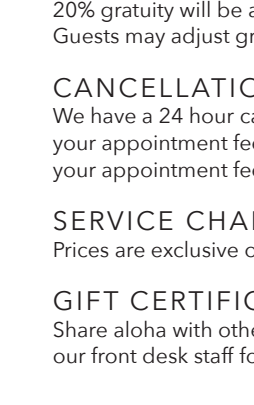
### CBD THERAPY

80 MINUTES | \$270

Begin your CBD-elevated treatment with a delicious wellness shot that includes 30mg of full-spectrum CBD and your daily dose of natural roots, fruits, and adaptogenic mushrooms to strengthen the body and mind. Plant therapy continues in the treatment room where your massage is performed with a powerful blend of 75mg of broad-spectrum CBD and other therapeutic plant extracts such as menthol, capsaicin, and glucosamine to relax the nervous system and provide immediate relief from aches, pains, sore muscles, arthritis, strains, and inflammation.

## LAUREL FACIALS

The Laurel line is a ritualistic range of organic flower and herb-based skincare, formulated with impeccably sourced, highly vibrant, whole plants picked at their peak for unmatched transparency, purity, and results.



## VIBRANCY REVIVAL

### ANTIOXIDANT FACIAL

50 MINUTES | \$205 80 MINUTES | \$255

Experience the potency and power of phytonutrients in their organic, whole plant form. Transform dull, dry, dehydrated skin into vibrant, healthy skin with the help of herbal superfoods like Nettle Leaf, Cranberry Seed, Jasmine Flower, Frankincense Resin, and Calendula Blossoms for optimal skin wellness. This facial is ideal for most skin types with a primary focus on reducing stagnation, restoring life, and aging vibrantly.

## PLANT-ASSISTED DETOX

### SOOTHING FACIAL

50 MINUTES | \$205 80 MINUTES | \$255

Clear and decongest skin by reducing inflammation, diversifying the microbiome, and enhancing lymphatic flow. Organic whole plants including Chamomile Flowers, Passionflower, Turmeric Root, and Lavender Buds support healthy skin functioning without stripping, drying, or wiping out helpful flora colonies. This soothing and clarifying facial is ideal for congested and acneic skin types with primary focus on calming irritation, restoring equilibrium, and detoxing on multiple levels.

## SUN GODDESS

### REPAIRING FACIAL

50 MINUTES | \$205 80 MINUTES | \$255

Whether healing a sunburn or brightening years of sun damage, this facial is for sun-lovers of all kinds. Whole plant phytonutrients work synergistically to nourish, repair, and prevent further oxidative damage. Camu Camu, Rosehip, Sea Buckthorn, and Calendula deliver visible results that can be seen after just one treatment. This facial is ideal for hyperpigmentation, scarring and sun damage, with a primary focus on brightening and evening skin tone, reducing inflammation, and strengthening connective tissue.

## LILFOX FACIALS

Lilfox is Intelligent Skin Couture - the intersection of clean beauty, organic botanicals, clinically-proven, lab actives, and out-of-the-ordinary aromatics and textures.



## MYSTIC AWAKENING

### CRYO + THERMAL FACIAL

50 MINUTES | \$205 80 MINUTES | \$255

The ultimate in skin rejuvenation. Through the use of warm + cool facial tools and exceptional botanical extracts, we tone, tighten, and detoxify the skin. The constricting and expanding of blood vessels encourages nutrient delivery, cellular stimulation, and increased detoxification of cellular waste. By means of facial alchemy, the finished product leaves the skin quenched, pores cleaner, fine lines smoother, and contours sculpted on a base of radiant, plumped skin.

## THE AMAZONIAN

### HYDRATION FACIAL

50 MINUTES | \$205 80 MINUTES | \$255

This deeply hydrating treatment is life-bringing for dry, weary complexions. Advanced formulas incorporating Raw Cacao, Babassu Oil, and Niacinamide, offer nourishment and regeneration. Hyaluronic Acid plumps the skin and boosts moisture retention. Tetra C, Camu Camu, and Kakadu Plum Extract provide a concentrated dose of vitamin C for an instant glow and a sun-kissed appearance.

## MELLOW MOONBEAM

### CLARIFYING FACIAL

50 MINUTES | \$205 80 MINUTES | \$255

Luxury meets functionality. Deeply cleansing and perfect for skin prone to congestion, acne, reactivity, or redness. This restorative experience provides deep purification with a powerhouse of pore-cleansing enzymes and a Chlorophyll + Tourmaline Mask treatment that ensures that you walk away feeling polished and mellowed out.

## LUMINOUS QUARTZ

### FIRMING FACIAL

50 MINUTES | \$205 80 MINUTES | \$255

A ritual of crystalline, cosmic alignment to purify, hydrate, and harmonize. An energetically activating and cleansing treatment for mature, uneven, dull, and lackluster skin types. Papaya and Pineapple Enzymes, Rose Hydrosol, and a Quartz Crystal Facial Roller treatment come together to brighten the complexion, reduce fine lines, heal breakouts, and minimize pores.

## ENHANCEMENTS

Elevate your experience to make it truly transformational.



### ADD TO ANY TREATMENT

DEEP TISSUE | \$30

COUPLES SUITE | \$20

AROMATHERAPY | \$15

HOT STONES | \$25

TRANSDERMAL CBD | \$30

CBD WELLNESS SHOT | \$15

TROPICAL WARM HAIR MASK + SCALP MESSAGE | \$25

COCONUT CRUSH CRÈME HAND + FOOT EXFOLIATION | \$25

GEMSTONE-INFUSED COLLAGEN EYE MASK | \$10

GEMSTONE-INFUSED COLLAGEN EYE + LIP MASK | \$20

GEMSTONE-INFUSED COLLAGEN FACE MASK | \$30

### FACIALS ONLY

GUA SHA | \$15

CHILL WANDS | \$15

## GUEST INFORMATION

### CHECK-IN

Please arrive at least 15 minutes prior to your scheduled treatment to avoid reduced treatment time. A late arrival will result in a shortened treatment to accommodate other guests fairly.

### ATTIRE

You will receive a robe and slippers to wear between treatments and a locker for your personal belongings. We ask that you please leave jewelry and valuables in your suite. We are not responsible for items that are left or lost at the spa.

### SPA ETIQUETTE

The Spa at Koloa Landing is a place to restore your energy and relax. For the consideration of others, we request that guests speak softly and keep noise to a minimum. Please switch your cellular phones and electronic devices off or to silent mode.

### AGE POLICY

Guests under 18 years old may be permitted to receive selected services with advance notice, spa approval, and the accompaniment of a legal parent or guardian also receiving service within the same treatment room.

### HEALTH CONSIDERATIONS

Please inform us of any medical conditions (such as allergies, recent surgery, pregnancy, etc.) at the time of booking. You will also be asked to complete an intake form through email or upon arrival, so we can best customize your experience.

### PRODUCT AVAILABILITY

Equivocal treatment products may be substituted when there is no product availability.

### GRATUITY

20% gratuity will be added to all spa services for your convenience. Guests may adjust gratuity as they wish.

### CANCELLATION POLICY

We have a 24 hour cancellation policy. You will be charged 50% of your appointment fee for less than 24 hours notice and 100% of your appointment fee if you fail to advise of cancellation.

### SERVICE CHARGE AND TAX

Prices are exclusive of a 3% service charge and a 4.712% state tax.

### GIFT CERTIFICATES

Share aloha with others by purchasing a gift certificate! Please ask our front desk staff for details.